

# Immunohistochemical analysis of the distribution of measles related antigen in the intestinal mucosa in inflammatory bowel disease

M Iizuka, M Chiba, M Yukawa, T Nakagomi, T Fukushima, S Watanabe, O Nakagomi

## Abstract

**Background**—Measles virus is implicated in the aetiology of Crohn's disease. This measles hypothesis is mainly supported by immunohistochemical findings that the measles related antigen is present in the intestine of patients with Crohn's disease. Recently we isolated this antigen from the intestine of a patient with Crohn's disease using a molecular cloning technique and produced the monoclonal antibody against it (designated 4F12).

**Aim**—To discover whether the measles related antigen is uniquely present in Crohn's disease.

**Subjects/Methods**—Colonic mucosa samples from 20 patients with Crohn's disease, 20 with ulcerative colitis, 11 with non-inflammatory bowel disease (IBD) colitis, and nine controls were immunohistochemically stained with the anti-measles monoclonal antibody 4F12. The numbers of positive cells, the ratio of positive cells to nucleated cells, and the staining intensity of the positive cells were compared. Furthermore, the distribution of the measles antigen in other human organs was examined.

**Results**—Both the number of positive cells and the ratio of positive cells to nucleated cells were significantly increased in Crohn's disease, ulcerative colitis, and non-IBD colitis compared with controls ( $p < 0.05$ ) but were similar among the three disease groups. The staining intensity of the positive cells was also similar among the three disease groups. Small numbers of positive cells were observed in the oesophagus, stomach, duodenum, jejunum, and lung.

**Conclusions**—The presence of the measles related antigen in the colonic mucosa was not unique to Crohn's disease. These results, together with the observation that such a measles related antigen was derived from host protein, do not support the hypothesis that measles virus causes Crohn's disease.

(Gut 2000;46:163-169)

**Keywords:** Crohn's disease; measles virus; immunohistochemistry; ulcerative colitis; inflammatory bowel disease; molecular mimicry

Persistent measles virus infection has been implicated as a cause of Crohn's disease.<sup>1-7</sup> It was first claimed by Wakefield *et al.*<sup>1</sup> which

even had social implications in the rejection of measles vaccination in the United Kingdom.<sup>8</sup> This measles hypothesis is based mainly on immunohistochemical<sup>1-4</sup> and epidemiological findings.<sup>5-7</sup> Recent epidemiological investigations, however, did not support the association between measles virus and Crohn's disease.<sup>9-15</sup> The immunohistochemical evidence derives essentially from the observation that both the monoclonal antibody and the polyclonal hyperimmune serum specific for measles virus recognised the measles related antigen in the intestine of patients with Crohn's disease.<sup>1-3</sup> We confirmed this observation with the monoclonal antibody (MAS 182r: Harlan Sera-lab, Crawley Down, Sussex, UK) used by Wakefield *et al.*<sup>16</sup> However, the highly sensitive reverse transcription polymerase chain reaction (PCR) has failed to identify any measles virus genome in the intestinal tissues of patients with Crohn's disease.<sup>17-20</sup> Thus the measles hypothesis is very controversial.<sup>21</sup>

Our recent study,<sup>16</sup> in which cDNA library from intestinal tissue was screened with the monoclonal antibody MAS 182r, disclosed the unexpected result that the measles related antigen found in the intestine of patients with Crohn's disease was derived not from measles virus but from an as yet unidentified human protein. Combined with the negative PCR results, this observation is clearly incompatible with the hypothesis that measles virus persistently infects the intestine of patients with Crohn's disease. Therefore, to investigate the measles hypothesis fairly, it was imperative to clarify whether the measles related antigen was uniquely present in the intestine of patients with Crohn's disease. In this study, we investigated its distribution in the colonic mucosa of patients with several types of colitis and controls by immunohistochemical methods. Furthermore, its distribution in other human organs was also examined.

## Materials and methods

### TISSUE SAMPLES

Colonic mucosa was taken with informed consent from 20 patients with Crohn's disease, 20 with ulcerative colitis, 11 with non-inflammatory bowel disease (IBD) colitis, and nine without colitis (controls) by endoscopic biopsy or surgical resection. As a rule, samples

**Abbreviations used in this paper:** IBD, inflammatory bowel disease; PCR, polymerase chain reaction; ELISA, enzyme linked immunosorbent assay; GST, glutathione S-transferase; SDS, sodium dodecyl sulphate; PAGE, polyacrylamide gel electrophoresis.

First Department of Internal Medicine, Akita University School of Medicine, Akita, Japan

M Iizuka  
M Chiba  
M Yukawa  
S Watanabe

Department of Microbiology

T Nakagomi  
O Nakagomi

Department of Surgery, Yokohama Municipal Hospital, Yokohama, Japan  
T Fukushima

Correspondence to:  
Dr M Iizuka, First Department of Internal Medicine, Akita University School of Medicine, Hondo 1-1-1, Akita City, Akita 010-8543 Japan.

Accepted for publication 21 July 1999

Table 1 Clinical profiles of patients from whom colonic mucosa was taken

Patient group	Number of patients	Mean age (years)	Sex (M:F)
Crohn's disease	20	22.9 (9-44)	13:7
Ulcerative colitis	20	33.9 (16-64)	9:11
Non-IBD colitis	11	42.4 (17-74)	6:5
Behçet disease	3		
Ischaemic colitis	2		
Campylobacter colitis	1		
Radiation colitis	1		
Intestinal tuberculosis	1		
Shönlein-Henoch purpura	1		
Indeterminate colitis	2		
Control	9	48.8 (28-68)	6:3
Colon polyp	5		
Colon cancer	2		
Intestinal parasite disease	1		
Irritable bowel syndrome	1		

Values in parentheses are ranges. IBD, inflammatory bowel disease.

were taken from inflamed mucosa (margin of ulcer, erosion, aphthoid lesion, oedematous mucosa) in the patients with colitis or from macroscopically normal mucosa in the patients without (controls). In each case, the diagnosis was established by standard clinical, radiological, endoscopic, and histological criteria. Table 1 gives the clinical profiles of the patients.

#### PREPARATION OF THE MONOCLONAL ANTIBODY AGAINST MEASLES VIRUS

As previously reported,<sup>16</sup> we screened 1.5 million clones from a  $\lambda$ gt11 expression library, constructed from the intestine of a patient with typical Crohn's disease, with measles specific monoclonal antibody (MAS 182r), which recognises the measles virus nucleocapsid protein,<sup>1</sup> and identified one positive clone. The double stranded DNA of the positive clone was isolated from the  $\lambda$ gt11 vector gene and amplified by PCR. Then the PCR amplified DNA was

inserted into the TA cloning vector (Invitrogen, San Diego, California, USA), and the nucleotide sequence of the positive clone determined by the DyeDeoxy Terminator Cycle Sequencing method (Applied Biosystems, a division of Perkin-Elmer Corporation, Cleveland, Ohio, USA). On the basis of the nucleotide sequence determined, genetic analysis of the positive clone was performed. Furthermore, a monoclonal antibody against the positive clone was produced.<sup>22</sup> Firstly, a Balb/c mouse was immunised with  $\lambda$ gt11 expressed positive clone mixed with Freund's adjuvant, and then cell lines were created in vitro by fusing spleen lymphocytes with a myeloma cell line. Spleen and myeloma cells were fused and plated in a special medium containing hypoxanthine, aminopterin, and thymidine. Hybridoma that could produce a specific antibody to the positive clone was selected by enzyme linked immunosorbent assay (ELISA). A cell suspension of this hybridoma was injected into the peritoneum of the mouse. Thereafter, ascitic fluid was aseptically aspirated. After purification, the specificity of the monoclonal antibody, named 4F12, was examined by western blot<sup>23</sup> and immunofluorescence.<sup>24</sup> In addition, a double immunohistochemical study<sup>24</sup> with two monoclonal antibodies, MAS 182r and 4F12, was performed using two staining substances, diaminobenzidine and 4-chloro-1-naphthol, to confirm that both monoclonal antibodies reacted with the same cells in the intestinal tissue.

We expressed the positive clone as a fusion protein with glutathione S-transferase (GST) using the GST gene fusion system (Amersham Pharmacia Biotech, Amersham, Buckinghamshire, UK).<sup>25</sup> Briefly, the double stranded DNA of the positive clone was ligated into the pGEX-4T-2 vector which can maintain the

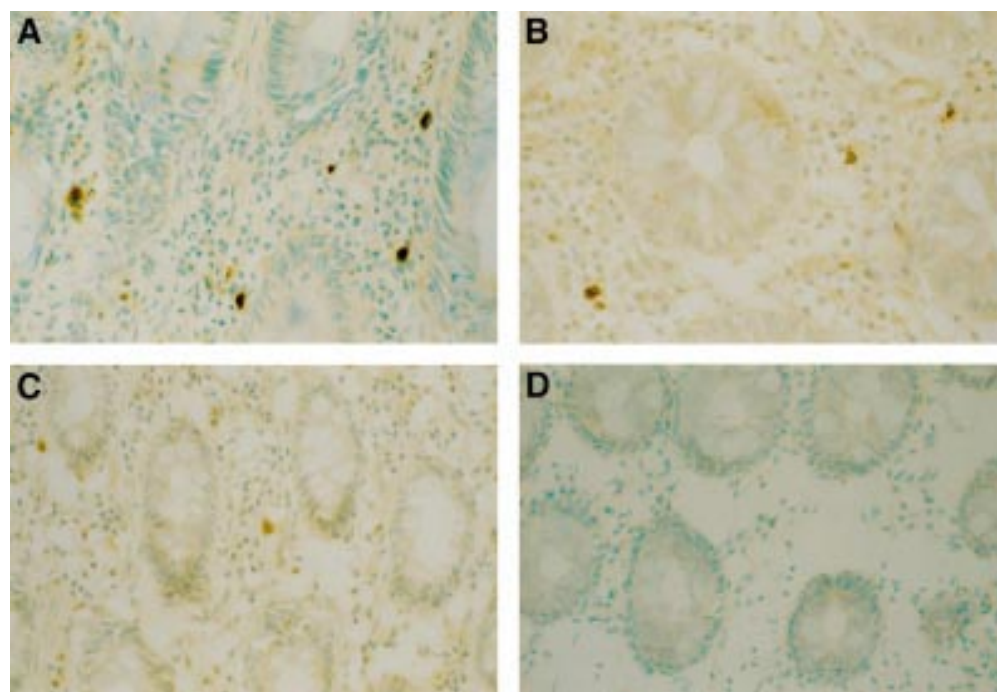


Figure 1 Staining intensity of positive cells: (A) strong; (B) moderate; (C) weak. No positive cells are observed in the negative control sample (D).

	10	20	30	40	50	
Positive clone	1 GCACAATTGA GAAGGCACCTT <b>GCGGACGCTA</b> AAGCTCTTGT TGAAGATTA	50				
AA449055	224 GCACAATTGA GAAGGCACCTT <b>GCGGACGCTA</b> AAGCTCTTGT TGAAGATTA	273				
	60	70	80	90	100	
Positive clone	51 AGAGATCATG ACGATGCAGC AGAATCTCTG ATTGAGCAAA CCACAGCTCT	100				
AA449055	274 AGAGATCATG ACGATGCAGC AGAATCTCTG ATTGAGCAAA CCACAGCTCT	323				
	110	120	130	140	150	
Positive clone	101 CAACAAGCGA GTAGAAGCCA TGAACACGTA TCAGGAAGAA ATTCAAGAAC	150				
AA449055	324 CAACAAGCGA GTAGAAGCCA TGAACACGTA TCAGGAAGAA ATTCAAGAAC	373				
	160	170	180	190	200	
Positive clone	151 TTAATGAAGT CCGGAGACAT CCGCCACGGT CCACGTTAGT TATGGGAATC	200				
AA449055	374 TTAATGAAGT CCGGAGACAT CCGCCACGGT CCACGTTAGT TATGGGAATC	423				
	210	220	230	240	250	
Positive clone	201 CAGCAAGAAA ACAGACAAAT CAGAGAGTTG CAACAAGAAA ACAAGAATT	250				
AA449055	424 CAGCAAGAAA ACAGACAAAT CAGAGAGTTG CAACAAGAAA ACAAGAATT	473				
	260	270	280	290	300	
Positive clone	251 ACGTACATCT CTGGAAGAAC ATCAGTCGGC CTTGGAACCT ATAATGAGCA	300				
AA449055	474 ACGTACATCT CTGGAAGAAC ATCAGTCGGC CTTGGAACCT ATAATGAGCA	523				
	310	320	330	340	350	
Positive clone	301 AGTACCGAGA ACAATGTTT AGATTGCTAA TGGCTAGCAA A=AAAGATGA	350				
AA449055	524 AGTACCGAGA ACAATGTTT AGATTGCTAA TGGCTAGCAA AA=AAAGATGA	573				
	360	370	380	390	400	
Positive clone	351 TCCGGG.....	400				
AA449055	574 TCCGGGTATA ATAATGAAGT TAAAAGA.....	400				

Figure 2 Multiple alignment of the nucleotide sequences between the positive clone and AA449055. Nucleotide sequences of non-homologous regions are shown in bold and underlined.

	10	20	30	40	50
TIEKALADAK	ALVERLRDHD	DAAESLIEQT	TALNKRVEAM	KOYQEEIQEL	
	60	70	80	90	100
NEVARHRPRS	TLVMGIQEN	RQIRELQEN	KELRTSLEEH	QSALELIMSK	
	110				
YREQMFRLLM	ASKKDDP				

Figure 3 Deduced amino acids sequence of the positive clone. Each amino acid is shown using the single letter code.

GST reading frame. Then competent *Escherichia coli* BL21 cells (Stratagene, La Jolla, California, USA) were transformed by the ligation reaction and a fusion protein was expressed by adding 0.1 mM isopropyl  $\beta$ -D-thiogalactoside. A fusion protein was purified from the bacterial lysates by affinity chromatography using glutathione-Sepharose 4B, and eluted in glutathione elution buffer containing 10 mM reduced glutathione in 50 mM Tris/HCl (pH 8.0). Expression of the fusion

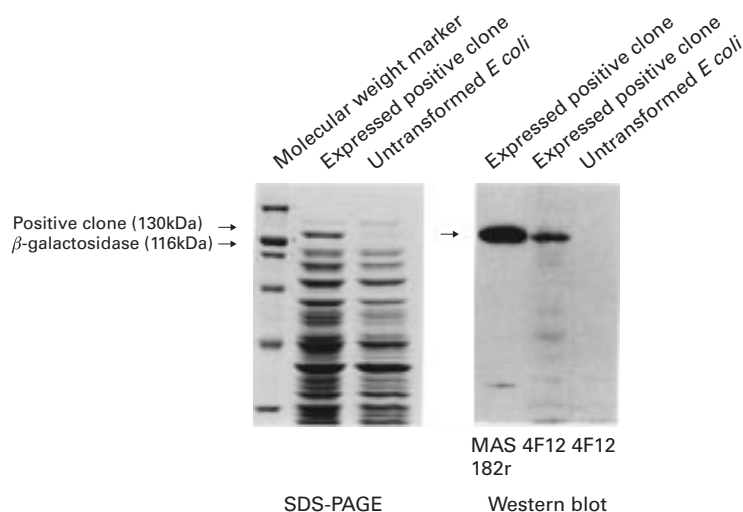


Figure 4 SDS/PAGE of the positive clone expressed by *Escherichia coli* as a fusion protein with  $\beta$ -galactosidase, and western blot analysis of the fusion protein (the positive clone and  $\beta$ -galactosidase) and anti-measles monoclonal antibodies.

protein was screened by both sodium dodecyl sulphate (SDS)/polyacrylamide gel electrophoresis (PAGE) and western blot.

#### IMMUNOHISTOCHEMISTRY

An immunohistochemical study was performed by the indirect immunoperoxidase staining method.<sup>26, 27</sup> Briefly, tissue pieces were fixed with periodate/lysine/4% paraformaldehyde. Then serial frozen sections were made and endogenous peroxidase activity was blocked with 5 mM periodic acid/3 mM sodium borohydride. The monoclonal antibody 4F12 was applied as the first antibody, and peroxidase labelled rabbit anti-mouse immunoglobulin (Dako, Copenhagen, Denmark) as the second antibody. For nuclear staining after the diaminobenzidine reaction, 0.1% methyl green was used. In addition, in the case of Crohn's disease, double immunohistochemical staining using 4F12 and anti-CD68 monoclonal antibody (clone PG-M1, Dako) was performed.

After nuclear staining, all samples were coded and three authors counted positive cells independently. The authors counted all positive cells in the lamina propria within the  $\frac{1}{2}$  view ( $400\times$  magnification) where positive cells were most densely observed. Positive cells in lymph follicles were excluded from the count. The numbers of positive cells were expressed as cells/mm<sup>2</sup>. Nucleated cells in the same area were also counted and the ratio of positive cells to nucleated cells was evaluated. In addition, the staining intensity of the positive cells was classified into three grades: strong (fig 1A), moderate (fig 1B), and weak (fig 1C). No positive cells were observed in the negative control sample (fig 1D), for which the incubation with 4F12 was omitted. We judged the staining intensity as strong when more than a half of the positive cells in the sample were stained as strongly as those shown in fig 1A.

The data on numbers of positive cells and the ratio of positive cells to nucleated cells were analysed for statistical significance by the Mann Whitney U test to compare mean values between groups; proportions of the staining intensities of each group were compared by Fisher's exact test.

We also examined the distribution of 4F12 positive cells in several human organs (oesophagus, stomach, duodenum, jejunum, liver,

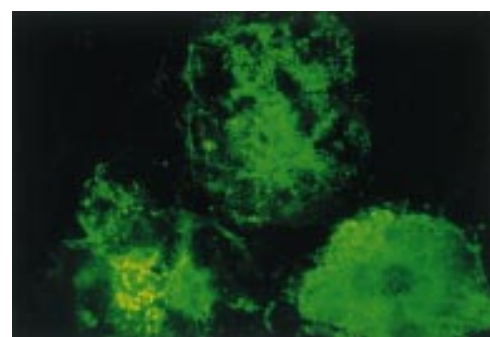
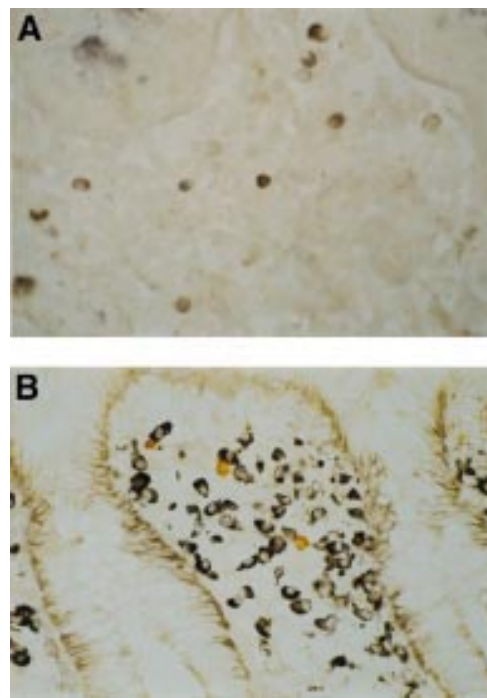


Figure 5 Immunofluorescence study of reaction of measles virus infected cells with 4F12. Syncytium in measles virus infected Vero cells is clearly stained with 4F12.



**Figure 6** Double immunohistochemical study with MAS 182r and 4F12. Virtually all positive cells are doubly stained with MAS 182r and 4F12 (A). Doubly stained cells appear as a mixture of dark blue and brown. Cells stained singly with either 4-chloro-1-naphthol (dark blue) or diaminobenzidine (brown) are shown in (B).

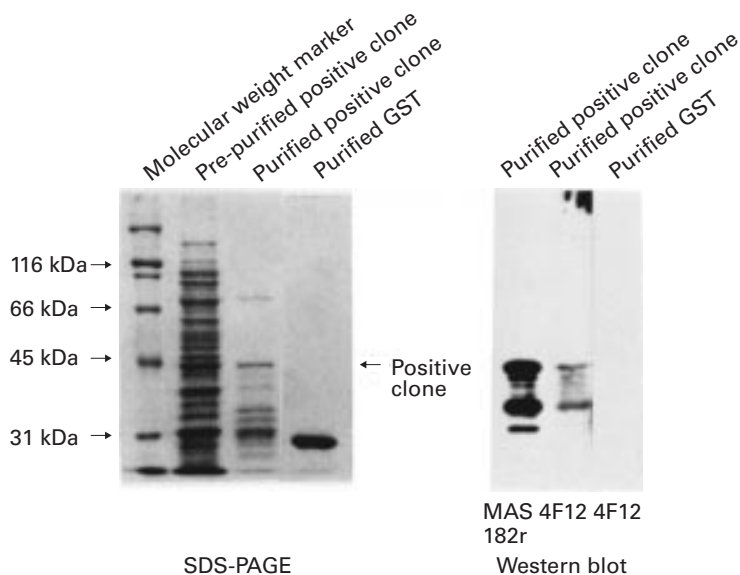
lung, spleen, kidney, heart) taken at autopsy from a 43 year old female patient (cause of death mitral stenosis).

## Results

### PREPARATION OF MONOCLONAL ANTIBODY

#### Genetic analysis of the positive clone

A homology search showed 99% of the nucleotide sequence of the positive clone was identical with that of the human gene (AA449055) (fig 2), but no appreciable homology was found between the positive clone and the measles virus. Figure 3 shows the deduced amino acid



**Figure 7** SDS/PAGE of the positive clone expressed as a fusion protein with GST, and western blot analysis of the fusion protein and anti-measles monoclonal antibodies.

sequence of the positive clone. We could not find any definite homologous amino acid sequence in the protein data bases.

#### Specificity of 4F12

SDS/PAGE showed a fusion protein containing the positive clone and  $\beta$ -galactosidase at 130 kDa (fig 4). The western blot showed that both MAS 182r and 4F12 formed strong bands with the fusion protein and that no positive band was formed between 4F12 and untransformed *E coli* extracts (fig 4). We also confirmed by western blot that 4F12 did not react with  $\beta$ -galactosidase (data not shown).

The immunofluorescence study clearly shows that measles virus infected cells reacted with 4F12 (fig 5) as well as with MAS 182r (data not shown). Cells not infected with measles virus were not stained with either 4F12 or MAS 182r (data not shown). The double immunohistochemical study showed that virtually all MAS 182r positive cells were stained with 4F12 (fig 6A) and vice versa.

#### Expression of a fusion protein of the positive clone using the GST gene fusion system

SDS/PAGE showed the positive clone as a fusion protein of GST at 45 kDa (fig 7). Ladder bands of less than 45 kDa are assumed to be partially decomposed fusion proteins. The thin band at about 70 kDa is suggested to be an *E coli* dnaK protein that was sometimes co-purified with GST recombinant protein.<sup>28</sup> The western blot showed that both MAS 182r and 4F12 formed positive bands with the fusion protein and partially decomposed fusion proteins (fig 7). No positive band was formed between 4F12 and the purified GST (fig 7).

### IMMUNOHISTOCHEMISTRY

#### Observation of 4F12 positive cells

Positive cells were observed in all tissue samples. All positive cells were stained in the cytoplasm, and some were stained in both the cytoplasm and the nucleus. As Wakefield and colleagues<sup>1</sup> reported, positive cells comprised macrophages, lymphocytes, vascular endothelial cells, fibroblasts, and neutrophils. The double immunohistochemical study showed that some positive cells were doubly stained with anti-CD68 monoclonal antibody.

#### Numbers of positive cells

Figure 8 shows the numbers of positive cells. The mean (SE) number of positive cells was 22.2 (4.7) in Crohn's disease, 21.6 (3.5) in ulcerative colitis, 25.2 (6.7) in non-IBD colitis, and 8.9 (1.5) in controls; the increase in Crohn's disease, ulcerative colitis, and non-IBD colitis compared with controls was significant ( $p < 0.05$ ). No significant difference was found between the three disease groups.

#### Ratio of positive cells to nucleated cells

The ratio of positive cells to all nucleated cells is expressed as a percentage and shown in fig 9. The mean (SE) was 4.3 (1.1) in Crohn's disease, 2.9 (0.5) in ulcerative colitis, 4.6 (1.2) in non-IBD colitis, and 1.6 (0.3) in controls, representing a significant increase in Crohn's

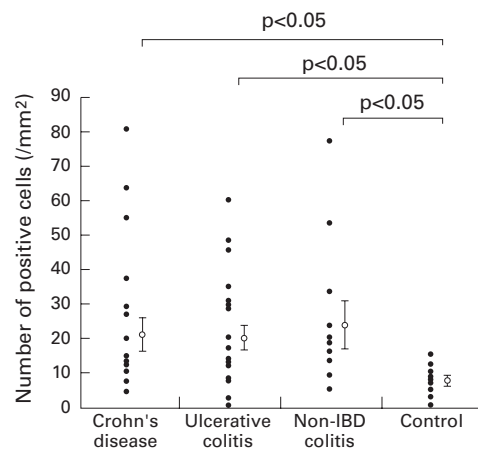


Figure 8 Numbers of positive cells in the colonic mucosa. The number of positive cells for each sample is shown as a closed circle. The mean and SE of the numbers of positive cells in each group is shown as an open circle and vertical bar. IBD, inflammatory bowel disease.

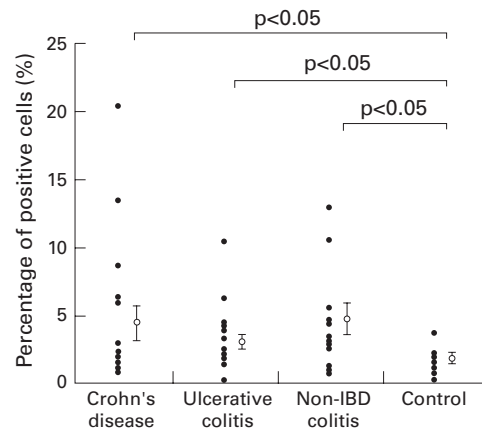


Figure 9 Ratio of positive cells to nucleated cells expressed as a percentage. The percentage for each sample is shown as a closed circle, and the mean and SE for each group is shown as an open circle and vertical bar.

disease, ulcerative colitis, and non-IBD colitis compared with controls ( $p < 0.05$ ). No significant difference was found between the three disease groups.

*Staining intensity of positive cells*

Figure 10 shows the proportions of the staining intensities of the positive cells in each group. Positive cells were stained strongly in 25% in Crohn's disease, 20% in ulcerative colitis, 27% in non-IBD colitis, but 0% in controls, and were stained moderately in 45% in Crohn's

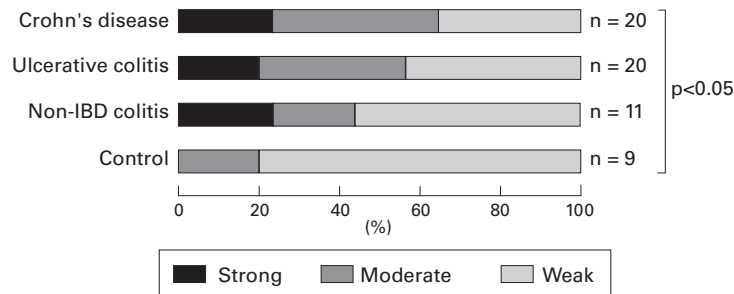


Figure 10 Proportions of the staining intensities in each group. The proportion staining strongly is shown as black, that staining moderately as dark grey, and that staining weakly as grey.

disease, 35% in ulcerative colitis, 18% in non-IBD colitis, and 22% in controls. A significant difference ( $p < 0.05$ ) was found between Crohn's disease and controls, but no significant difference was found between the three disease groups.

*Distribution of positive cells in human organs*

Small numbers of positive cells were observed in tissue samples from the oesophagus, stomach, duodenum, jejunum, and lung, but no positive cells were identified in tissue samples from the liver, spleen, kidney, and heart (data not shown).

**Discussion**

This study does not show that the measles related antigen is exclusively present in the intestine in Crohn's disease; it was also present in the intestine in ulcerative colitis and non-IBD colitis. These results are not in accordance with the previous immunohistochemical study by Wakefield *et al.*<sup>1</sup> in which positive cells were observed in the intestine of patients with Crohn's disease but not in the intestine of two patients with intestinal tuberculosis. In this study we used the monoclonal antibody 4F12 instead of MAS 182r which was used by Wakefield *et al.*, as we found that 4F12 and MAS 182r recognised the same epitope and that both monoclonal antibodies reacted with the same cells in the intestine on immunohistochemical examination. In our study positive cells were weakly stained in more than half of the colonic samples from patients with non-IBD colitis. Therefore it is possible that the weakly stained cells were regarded as negative by Wakefield *et al.*

We recently reported that the origin of the measles related antigen found in the intestine in Crohn's disease was not measles virus but an as yet unidentified human protein.<sup>16</sup> These results, together with the negative reverse transcription PCR reports,<sup>17-20</sup> are incompatible with the hypothesis that measles virus persistently infected the intestine in Crohn's disease. The immunohistochemical evidence supporting the measles hypothesis is based on the theory that measles antibody recognises measles virus itself and the measles virus antigen is uniquely present in Crohn's disease. Our results directly contradict this theory, thereby making the measles hypothesis less attractive. We further analysed the antigenicity of the positive material called "measles related antigen". Western blot analysis showed that both monoclonal antibodies, MAS 182r and 4F12, reacted with each fusion protein of the "measles related antigen"—that is, the one constructed from the "measles related antigen" and GST and that constructed from the "measles related antigen" and  $\beta$ -galactosidase. Conversely, both monoclonal antibodies similarly reacted with measles virus infected cells. As the "measles virus related antigen" was not detected in human kidney, we consider that both monoclonal antibodies reacted with the measles virus itself in the measles virus infected Vero cells which are derived from monkey kidney cell lines. From these observations, we

think that MAS 182r and 4F12 recognise the identical epitope and that such an epitope can be expected to be shared between the “measles related antigen” and the measles virus. Therefore we hypothesise that anti-measles antibody cross reacted with the host derived “measles related antigen” in the intestine in Crohn’s disease which was therefore regarded as measles virus in the previous study. Although the possibility still remains that, in the present study, the antigen recognised in colonic mucosa by 4F12 is measles virus antigen (the measles specific antigen), we assume such a possibility is extremely slight for the following reasons. If 4F12 recognised “the measles specific antigen” in the colonic mucosa of Crohn’s disease, some measles virus genes ought to be identified by screening with anti-measles monoclonal antibody the 1.5 million clone cDNA library constructed from the intestine of a patient with Crohn’s disease. However, no measles virus genes were identified by the screening. Moreover, it is contradictory that the “measles specific antigen” increases temporally in the colonic mucosa in non-IBD colitis, which includes campylobacter colitis, intestinal tuberculosis, etc.

As described above, the “measles related antigen” has not been identified, as no homologous proteins have been found in the protein data bases. However, the nucleotide sequence of the positive clone, which is thought to be a gene fragment, was 99% homologous with the human gene (AA449055) deposited in DNA data bases. A Southern blot analysis further confirmed the human origin of the “measles related antigen”.<sup>16</sup> It is not known what role the “measles related antigen” plays in the intestine. In view of our immunohistochemical results showing that it was increased in inflamed colonic mucosa and observed in the immunocytes, it may be a byproduct of inflammation or belong to the group of cytokines or other chemical mediators. The double immunohistochemical study showed that many 4F12 positive cells also expressed the CD68 antigen, suggesting that they are macrophages. Previous studies<sup>29-30</sup> have reported that some macrophage subpopulations are increased in the inflamed intestinal tissues in IBD. Therefore it could be suggested that the “measles related antigen” is associated with a subpopulation of macrophages.

On the other hand, the possibility still exists that the host derived protein of the “measles related antigen” is the target of autoimmune response through molecular mimicry because it is assumed to share a common epitope with measles virus. The idea that antibodies to infectious agents cross react with normal human tissues has been previously put forward.<sup>31-33</sup> Srinivasappa and colleagues<sup>31</sup> examined the cross reactivities of 600 antiviral monoclonal antibodies and showed that about 3.5% of them reacted with normal mouse tissues. With reference to anti-measles monoclonal antibodies, cross reactivities with human intermediate filaments,<sup>32</sup> mouse anterior pituitary, gastric mucosa, salivary gland,

and neurones in the brain<sup>31</sup> have been reported. Cunningham and colleagues<sup>33</sup> reported that monoclonal antibodies that recognise epitopes on both enteroviruses and *Streptococcus pyogenes* were cross reactive with human cardiac myosin and such antibodies may be associated with autoimmune heart disease. Thus the “measles related antigen” may be the target of the autoantibody and may evoke intestinal damage in hosts that can produce antibody against it. However, further studies are needed to validate this autoimmune hypothesis.

In conclusion, our results clearly show the invalidity of the immunohistochemical evidence for the measles hypothesis and therefore they do not support the hypothesis that persistent measles virus infection is implicated in Crohn’s disease.

We thank Dr Sugita, Yokohama City University School of Medicine, for providing the colonic samples, Dr Kawamura, Akita University School of Medicine, for providing tissues from human organs, and Miss Pamyla Yates, Minnesota State University in Akita, for her critical review of the manuscript. This work was supported in part by a grant from the Kanoe Foundation of Research for New Medicine and Grant-In-Aid for Scientific Research from the Ministry of Education, Science and Culture, and a grant from the Ministry of Health and Welfare, Japan.

- 1 Wakefield AJ, Pittilo RM, Sim R, et al. Evidence of persistent measles virus infection in Crohn’s disease. *J Med Virol* 1993;39:345-53.
- 2 Wakefield AJ, Sim R, Akbar AN, et al. In situ immune responses in Crohn’s disease: a comparison with acute and persistent measles virus infection. *J Med Virol* 1997;51:90-100.
- 3 Lewin J, Dhillon AP, Sim R, et al. Persistent measles virus infection of the intestine: confirmation by immunogold electron microscopy. *Gut* 1995;36:564-9.
- 4 Miyamoto H, Tanaka T, Kitamoto N, et al. Detection of immunoreactive antigen, with a monoclonal antibody to measles virus, in tissue from a patient with Crohn’s disease. *J Gastroenterol* 1995;30:28-33.
- 5 Ekblom A, Wakefield AJ, Zack M, et al. Perinatal measles infection and subsequent Crohn’s disease. *Lancet* 1994;344:508-10.
- 6 Thompson NP, Montgomery SM, Pounder RE, et al. Is measles vaccination a risk factor for inflammatory bowel disease? *Lancet* 1995;345:1071-4.
- 7 Thompson NP, Montgomery SM, Pounder RE, et al. Measles vaccination as a risk factor for inflammatory bowel disease [letter]. *Lancet* 1995;345:1364.
- 8 Miller E, Waight P. Measles vaccination and Crohn’s disease [letter]. *BMJ* 1998;316:1745.
- 9 Feeney M, Clegg A, Winwood P, et al. A case-control study of measles vaccination and inflammatory bowel disease. *Lancet* 1997;350:764-9.
- 10 Hermon-Taylor J, Ford J, Sumar N, et al. Measles and Crohn’s disease [letter]. *Lancet* 1995;345:922-3.
- 11 Patriarca PA, Beeler JA. Measles vaccination and inflammatory bowel disease. *Lancet* 1995;345:1062-3.
- 12 Farrington P, Miller E. Measles vaccination as a risk factor for inflammatory bowel disease [letter]. *Lancet* 1995;345:1362.
- 13 MacDonald TT. Measles vaccination as a risk factor for inflammatory bowel disease [letter]. *Lancet* 1995;345:1363.
- 14 Baxter T, Radford J. Measles vaccination as a risk factor for inflammatory bowel disease [letter]. *Lancet* 1995;345:1363.
- 15 Metcalf J. Is measles infection associated with Crohn’s disease? *BMJ* 1998;316:166.
- 16 Iizuka M, Masamune O. Measles vaccination and inflammatory bowel disease [letter]. *Lancet* 1997;350:1775.
- 17 Iizuka M, Nakagomi O, Chiba M, et al. Absence of measles virus in Crohn’s disease [letter]. *Lancet* 1995;345:199.
- 18 Haga Y, Funakoshi O, Kuroe K, et al. Absence of measles viral genomic sequence in intestinal tissues from Crohn’s disease by nested polymerase chain reaction. *Gut* 1996;38:211-15.
- 19 Afzal MA, Armitage E, Begley J, et al. Absence of detectable measles virus genome sequence in inflammatory bowel disease tissue and peripheral blood lymphocytes. *J Med Virol* 1998;55:243-9.
- 20 Chadwick N, Bruce IJ, Schepelmann S, et al. Measles virus RNA is not detected in inflammatory bowel disease using hybrid capture and reverse transcription followed by the polymerase chain reaction. *J Med Virol* 1998;55:305-11.

- 21 Meulen TV. Measles virus and Crohn's disease: view of a medical virologist. *Gut* 1998;**43**:733-4.
- 22 Celis A, Dejgaard K, Celis JE. Production of mouse monoclonal antibodies. In: Celis JE, ed. *Cell Biology: a laboratory handbook*, 2nd ed. San Diego: Academic Press, 1998:392-7.
- 23 Towbin H, Staehelin T, Gordon J. Electrophoretic transfer of proteins from polyacrylamide gels to nitrocellulose sheets: Procedure and some applications. *Proc Natl Acad Sci USA* 1979;**76**:4350-4.
- 24 Nakane PK. Simultaneous localization of multiple tissue antigens using the peroxidase-labeled antibody method: a study on pituitary glands of the rat. *J Histochem Cytochem* 1968;**16**:557-60.
- 25 Smith DB, Johnson KS. Single-step purification of polypeptides expressed in *Escherichia coli* as fusions with glutathione S-transferase. *Gene* 1988;**67**:31-40.
- 26 Isobe Y, Chen ST, Nakane PK, et al. Studies on translocation of immunoglobulins across intestinal epithelium. I. Improvements in the peroxidase-labeled antibody methods for application to study of human intestinal mucosa. *Acta Histochem Cytochem* 1997;**10**:161-71.
- 27 Iizuka M, Chiba M, Horie Y, et al. Lymphoid cell subsets in colonic mucosa and HLA-DR antigens on colonic epithelia in colitis excluding ulcerative colitis and Crohn's disease. *Gastroenterol Jpn* 1990;**25**:700-7.
- 28 Yu-Sherman M, Goldberg AL. Involvement of the chaperonin dnaK in the rapid degradation of a mutant protein in *Escherichia coli*. *EMBO J* 1992;**11**:71.
- 29 Seldenrijk CA, Drexhage HA, Meuwissen SGM, et al. Dendritic cells and scavenger macrophages in chronic inflammatory bowel disease. *Gut* 1989;**30**:484-91.
- 30 Rugtveit J, Brandtzaeg P, Halstensen TS, et al. Increased macrophage subset in inflammatory bowel disease: apparent recruitment from peripheral blood monocytes. *Gut* 1994;**35**:669-74.
- 31 Srinivasappa J, Saegusa J, Prabhakar BS, et al. Molecular mimicry: frequency of reactivity of monoclonal anti-viral antibodies with normal tissues. *J Virol* 1986;**57**:397-401.
- 32 Fujinami RS, Oldstone MBA, Wroblewska Z, et al. Molecular mimicry in virus infection: crossreaction of measles virus phosphoprotein or of herpes simplex virus protein with human intermediate filaments. *Proc Natl Acad Sci USA* 1983;**80**:2346-50.
- 33 Cunningham MW, Antone SM, Gulizia JM, et al. Cytotoxic and viral neutralizing antibodies crossreact with streptococcal M protein, enteroviruses and human cardiac myosin. *Proc Natl Acad Sci USA* 1992;**89**:1320-4.